

HALF SECTION A-A

HALF SECTION B-B

SWAY BRACING FOR ONE BENT

Ground To Grade Feet	Length In Feet	Cross Lumber Ft.B.M.	Hardware In Pounds
10	14	70	27
11-14	18	80	27
15-16	18	90	27
17-19	20	100	27
20-21	22	110	27
22-23	24	120	27
24-26	26	130	27

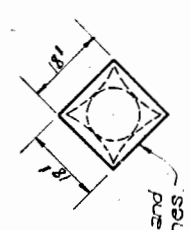
GENERAL NOTES.
 Specifications - La Highway Comm. July 1927
 Govern except where the details & notes of this plan necessitate variations from same.
 Design - Live Load: One typical 10-ton truck with no impact.
 Crossed Lumber to be Dense, S-15.
 18"x18" galvanized sheet metal, 28 gage, placed over tops of all piles and bent down as shown by dotted lines.
 18"x18" galvanized sheet metal, 28 gage, placed over tops of all piles and bent down as shown by dotted lines.

QUANTITIES FOR ONE BULKHEAD

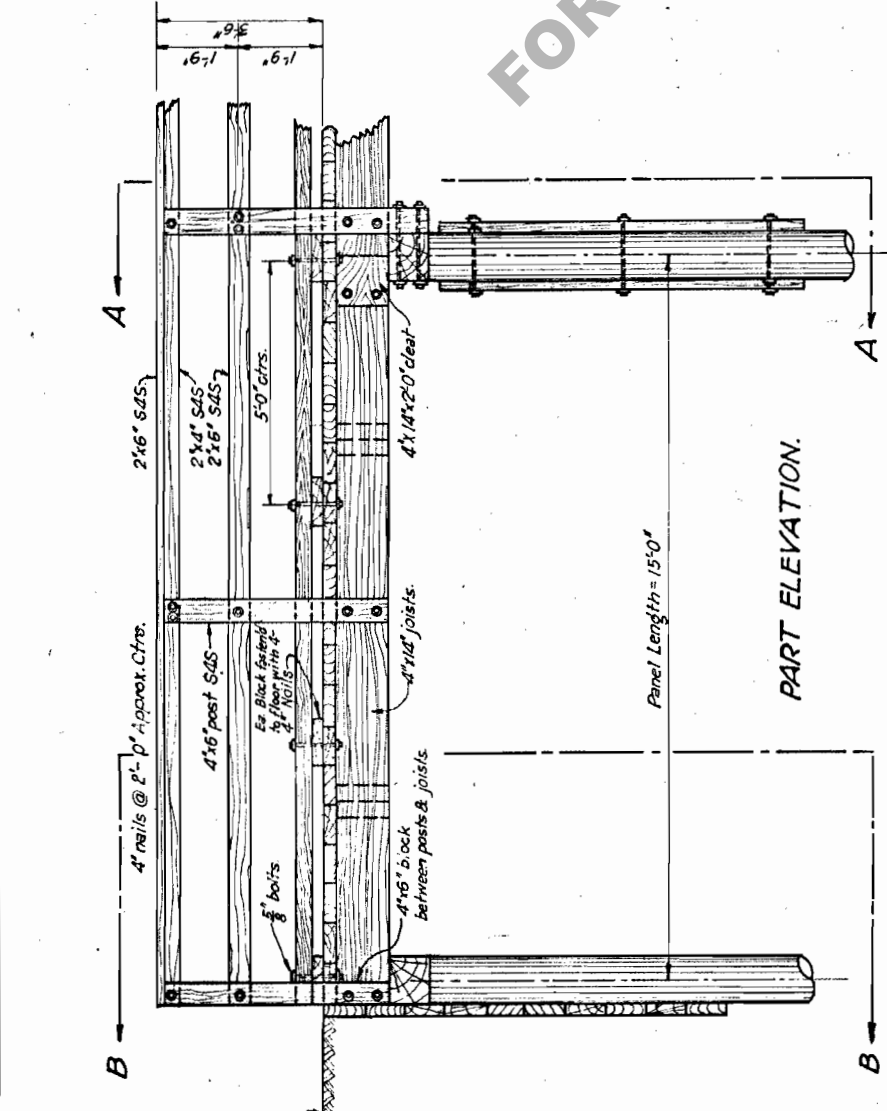
Number of Planks	Crossed Lumber Ft.B.M.	Untreated Lumber Ft.B.M.	Hardware in Pounds
3	218	54	40
4	303	54	40
5	394	54	40
6	492	54	45
7	592	54	45
8	692	54	45
9	792	54	50
10	892	54	50
11	992	54	50

QUANTITIES IN SUPERSTRUCTURE.

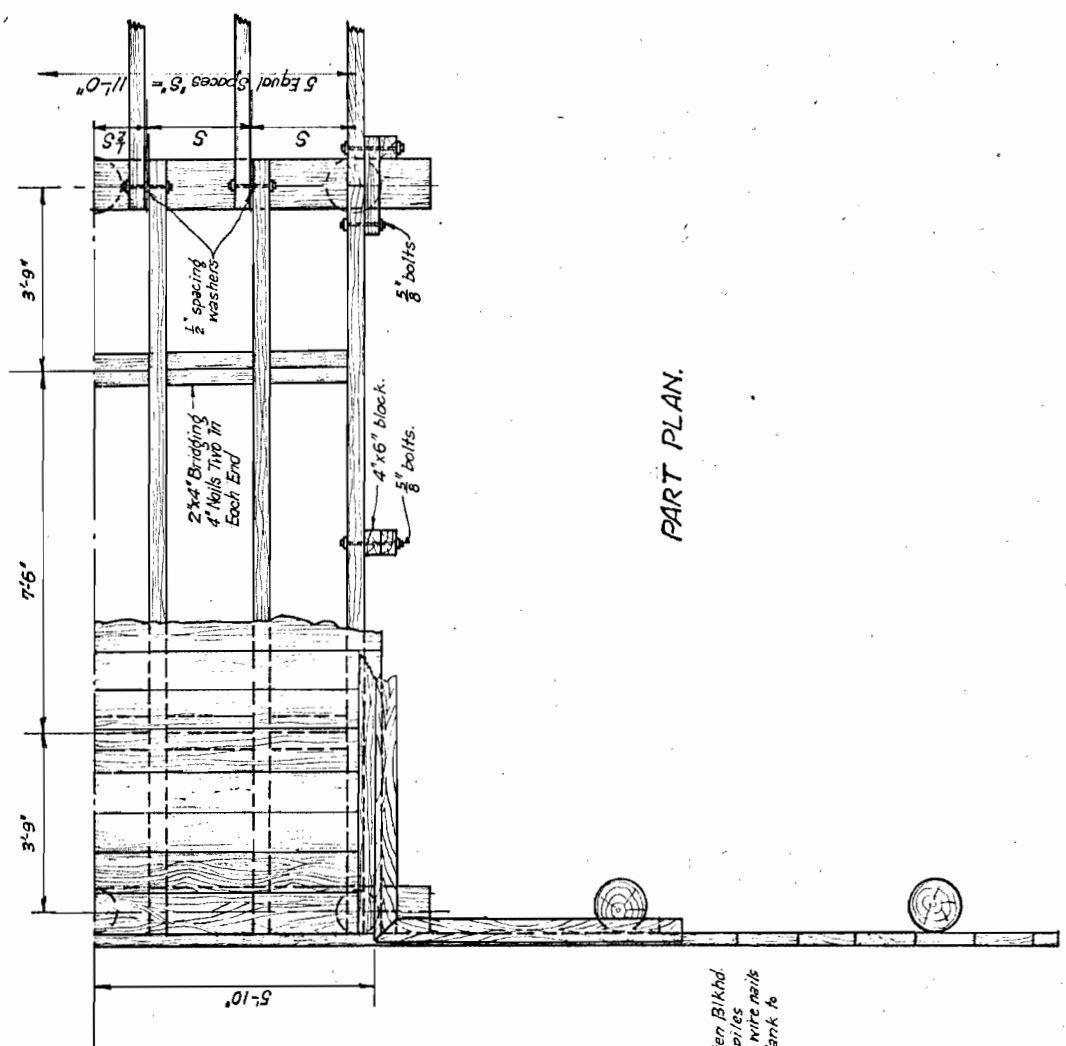
ONE PANEL COMPLETE	ADDITIONAL PANEL	
Crossed Lumber	Crossed Lumber	772 814
Untreated Lumber	Untreated Lumber	633 633
Hardware	Hardware	757 757
Feet B.M.	Feet B.M.	153 153



DETAIL OF SHEET METAL COVER OVER TOPS OF ALL PILES



PART ELEVATION.



PART PLAN.

Note: Fasten Bulkhead Planks to piles with 50d wire nails 2 in ea. plank to ea. pile.

STANDARD TIMBER TRESTLE
 11'-0" CLEAR ROADWAY 15'-0" SPAN.
 LOUISIANA HIGHWAY COMM.
 BATON ROUGE, LA.

July, 1927.

SCALE: 1/2" = 1'-0"
 SUBMITTED - Price Enc.

(8-2-183) 7-7-1